

CHELLINGTON SCHOOL

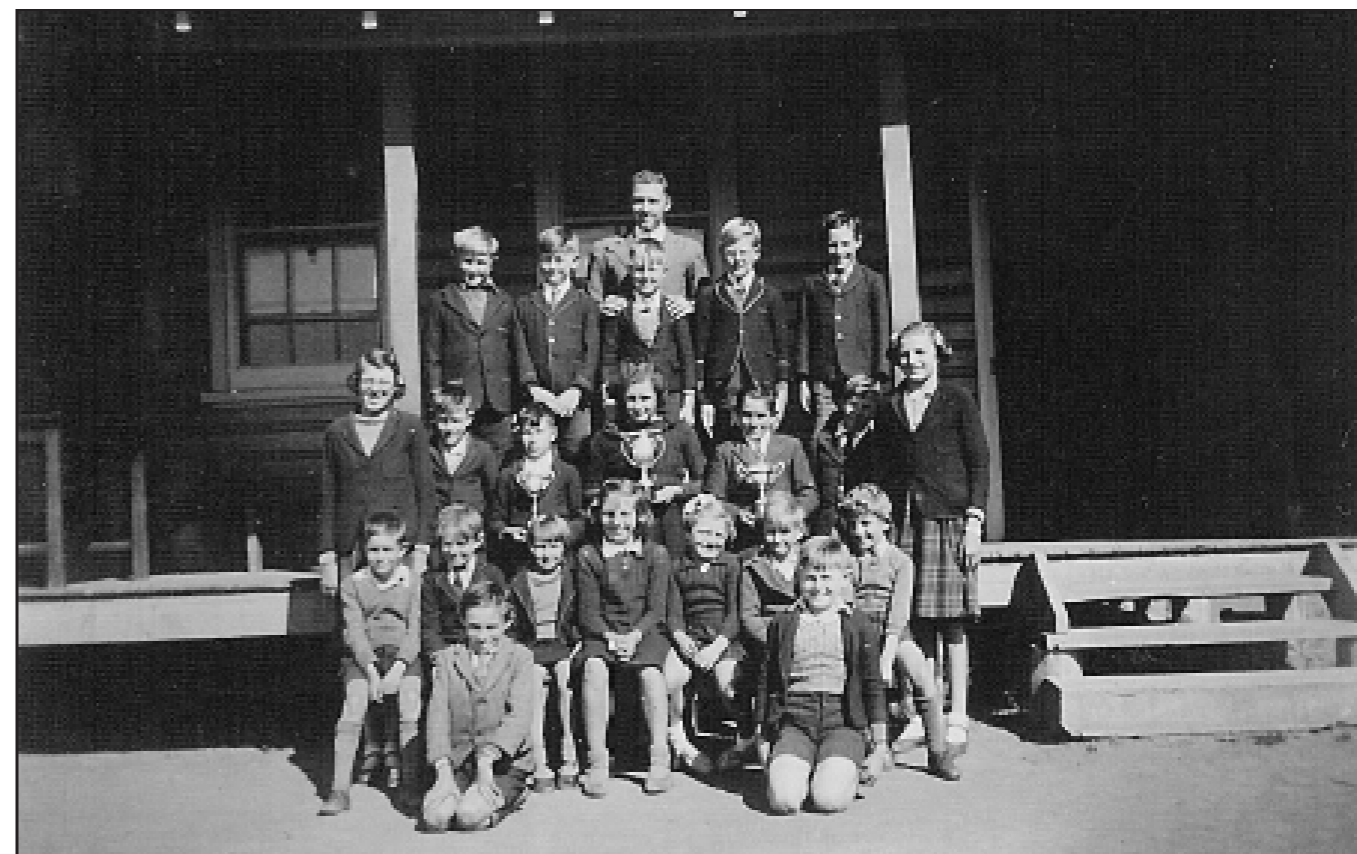
The first Chellington school was at the home of Mr and Mrs Charlie Mangelsdorf, at "Chellington" (*now "Harwood Park", two kilometres to the east of this site on the Boginderra Road*). It opened as a subsidised school from 1916-1917, then again from 1920-1924.

The Chellington School relocated around 1934. The old building was later moved from the house yard at "Chellington", to serve as a workman's hut. In 1934, the Chellington Subsidised School commenced operations in a building located on a two acre site (*just to the west of here in the "Tiverton" house yard, originally the site of the Boginderra Subsidised School*), where it operated until 1937. Gus Mangelsdorf later exchanged two acres of his land alongside the road (*this site*), for the old school site. From 1937-1942 the school had provisional status. The school closed in 1943, then reopened as a subsidised school from 1944-1946.

In 1937, the Chellington School was described as being "16' x 12'; unlined; had a verandah with a northerly aspect 16' x 8'; three windows; four seats and desks, each 100" long; teacher's table; two presses; two blackboards and easels; and a "useless" fireplace. It was originally built by two families, to be used as a subsidised school for seven children". They requested a new school, and the conversion of the old school into a summer shed, there being no trees large enough for shade.

In September 1938, the Thanowring School building was transferred to this site, and the Chellington School operated here until it closed in 1946. In 1960, the building was transferred to the Trungley North Recreation Reserve (*to become the Grenelle Public School*). The teachers were:-

Ada Kennedy	1916-1917
M Kennedy	1920
Lola Kennedy	1921
M Kennedy/E Ray	1922
Nea Baxter	1923-1924
M Meredith	1934-1935
VM Reid	1936
I May Curry	1937
Winifred Enid Wyse	24-8-1937 to 17-5-1940
Allan Charlton	17-5-1940 to 17-11-1945
Alfred Whealing	19-5-1942 to July 1942
Miss N Pollard	1944-1945
Miss L Ryan	1945-1946



Chellington School, c 1940 - Allan Charlton (teacher) Back: Garney Krause, ..., Kerry Krause, ..., Max Gregory. Middle: Shirley Forck, Lyell Mangelsdorf, Les Mangelsdorf, June Jepsen, Doug Ferguson, ..., Valda Forck. Front: Bill Ferguson, ..., Marj Jepsen, Heather Forck, Loraine Forck, ..., Ashley Steinhardt. On Ground: Jack Gregory.