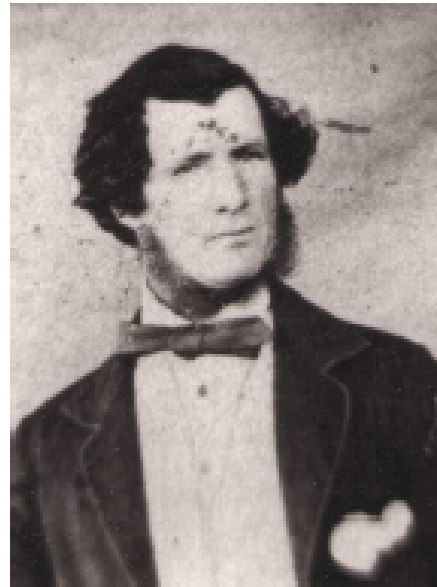


THE BROKEN DAM

“The Merool Country” comprised all of the vast western plains between the Lachlan and Murrumbidgee Rivers that were drained by the Merool (now “Mirrool”) Creek. The creek rises in the Ingalba Range, west of Temora.

Prior to the land clearing of the late nineteenth and early twentieth centuries, the “creek” wound generally westward through a succession of deep waterholes and gullies, interspersed with wide floodplains, before joining the Lachlan River.



George Harmon

In order to secure stock water in the often parched landscape, the leaseholder of Quandary Station, George Harmon, dammed the Merool Creek at this point in the early 1860s.

The scar created in the steep western creek bank by the relocation of tons of soil to the creek bed, can still be seen, as can the remains of the earthen wall George Harmon raised to the level of the eastern bank of the creek.

With water available, overland traffic between Wagga Wagga and Condobolin began to favour the site as a creek crossing. The dam quickly became an important meeting place because it was also favoured by traffic along the east / west travelling stock route between Narrandera and Young.

By the time the dam was overwhelmed by a flood in 1869, the intersection had become established. Therefore, despite its loss, stock and wagon traffic continued to choose the well worn crossing at the ‘broken dam’ for another thirty years, until the railway re-defined the flow of traffic across the “Merool Country”.

