

STEP BACK IN TIME...

with members of the Temora Shire Council Heritage Committee

Historic property "Bellendale" revisited

This edition of Step Back in Time features the property Bellendale and its Homestead, courtesy of a document compiled by Linda Thomas (nee Stockman) - "The Stockman Family History Book, 16th June, 2007".

Christian FH Stockman bought a property called "Bellendale" shortly after arriving in the Temora district and in 1902 built a substantial two storey brick homestead in an elevated position overlooking a distant range of hills and spectacular valley (known as Narraburra Hills).

"Bellendale" was a grazing and cropping property with chaff cutting playing a major role although was not strictly linked to the Stockman and Kleinig chaff mill operated by his son Arthur in Temora.

Improvements included a very basic shearing shed, a shed containing a chaff mill and a large stable block.

In the early 1920's the property was sold to Herbert Prior. Who then sold the property (after only one to two years) in 1923 to John Peter (Jack) Eisenhauer.

Jack and his son, also Jack, farmed "Bellendale" and the

neighbouring property "Overdale".

The property was eventually sold to G & H Eisenhauer.

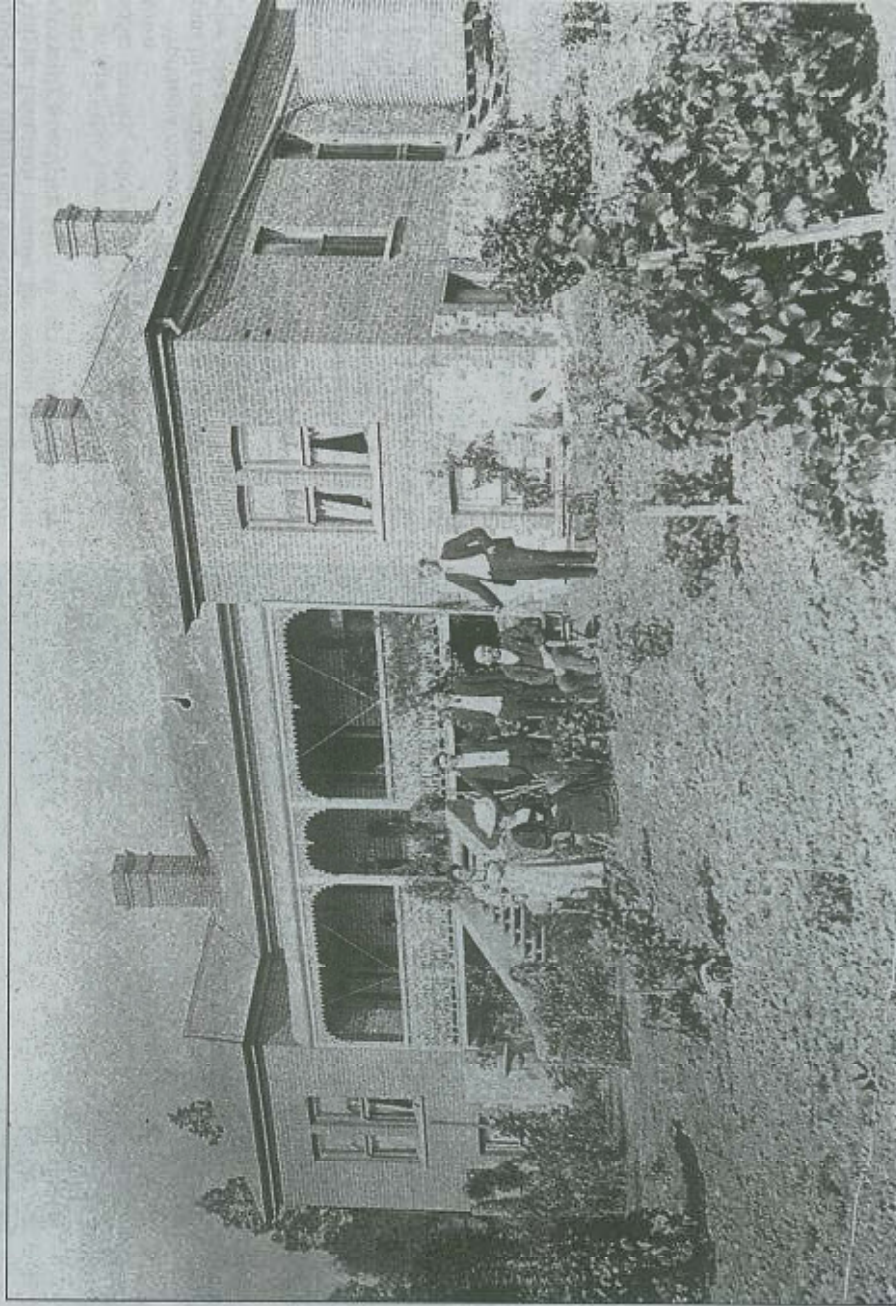
Some modifications were made to "Bellendale" homestead to modernise it, and to cater for a larger family with a kitchen and family room added to the back of the house with also a bathroom and laundry.

Christian FH Stockman had servants who did all the cooking in a downstairs kitchen and brought meals up to the family via a very narrow, steep staircase. The servants slept on fold up stretchers in the downstairs portion of the house, which to this day has an earthen floor.

In 1995 the property was sold to Liz Kirkby (current owner), who previously owned a cattle property in the Hunter Valley.

The "Bellendale" homestead is in the process of being included in the shire's list of significant heritage items as the homestead is a very rare farm house that was built of brick and of such a high stature.

Christian FH Stockman built a number of homesteads, which are all regarded in a similar light.



■ Bellendale homestead was built in 1902 in the Temora district.

16-12-08