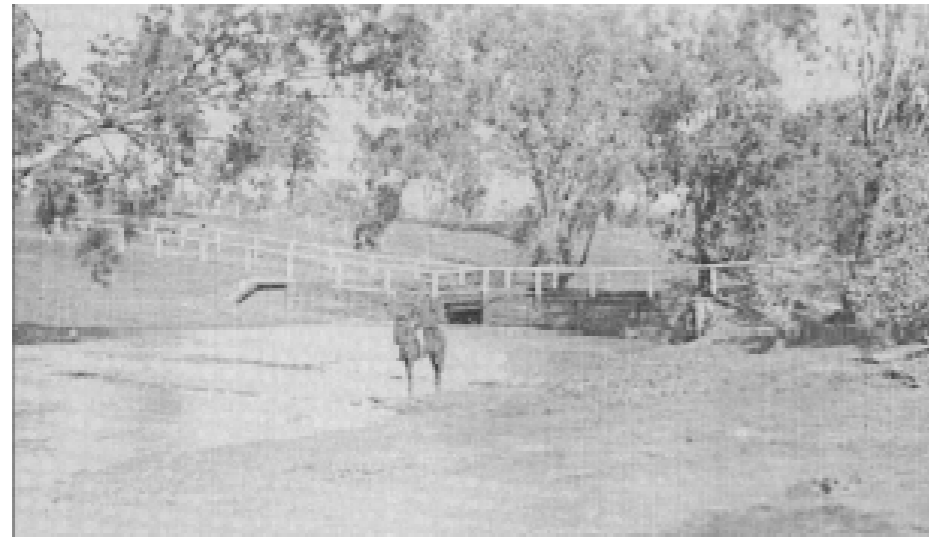


# BROKEN DAM BRIDGE

In about 1870, following the failure of Harmon's first dam, the Welman family of "Ariah Station", dammed the Mirrool Creek about one mile further downstream.

Concerned that the new dam might flood the existing creek crossing at the "Broken Dam", Welman commissioned Thomas Sanderson to build a bridge across the creek. This bridge was not very substantial and failed in its first flood, obliging travellers to return to the original crossing in the bed of the creek.

Finally, in September 1888, the NSW Public Works Department called tenders for construction of a bridge across the Mirrool Creek at Broken Dam. This bridge, the remains of which can still be seen in the creek bed just to the west of the present bridge, served until 1917. In 1916 a flood washed away the approaches to the wooden bridgework and although these were restored, in the following year another flood carried away the bridge itself.



**Broken Dam Bridge  
1885 - 1917**

On Wednesday 10th May 1933, a large crowd gathered at Broken Dam to watch the Hon. H.H. Newell, NSW Minister for Main Roads, officially open an impressive new 3-span timber bridge on this site, for which the local residents and Narraburra Shire Council had agitated since the loss of its predecessor.

Designed to last thirty years, the bridge served the district for seventy one years before being replaced, on the same alignment, by the present bridge, which was opened in April 2005.



**Broken Dam Bridge  
1933 - 2005**

