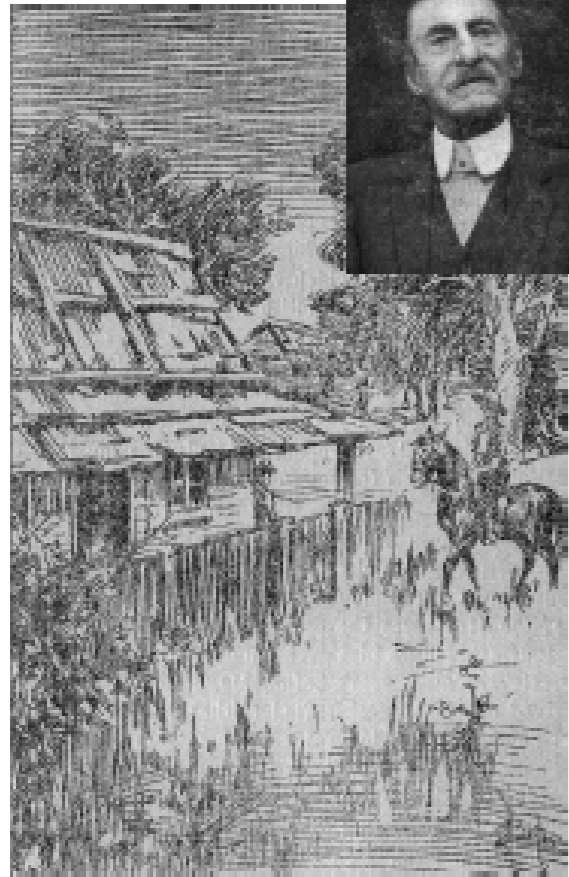


# THE BEEHIVE HOTEL

John Sanderson and his sons, Robert, Thomas and William, were employed as station hands on "Ariah Station" prior to pioneering the settlement at "Broken Dam". They recognized the commercial potential of the creek-side intersection of the main east-west and north-south travelling stock routes linking Young to Narrandera and Wagga Wagga to Condobolin.



After selecting a small block at the crossroads, in 1872 they built a modest slab and bark homestead and quietly extended their hospitality to travellers.

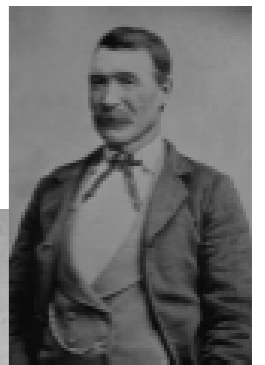
In 1874 Jeremiah and Anne Ryan succeeded the Sandersons in the Broken Dam homestead and licensed it as the "Bushman's Home" hotel. In 1876, after friends of the Ryan's discontinued licensing their Combaning Station homestead as the "Beehive Hotel", Jerry adopted that name for his Broken Dam shanty.

Thomas & Isabella Sanderson returned to conduct the "Beehive Hotel" from 1877 until 1879, when Donald and Mary Ann Cameron (parents of Dame Mary Gilmore) assumed the role of mine host. The Cameron's stayed until 1883. After their departure the hotel was again run by the Sanderson family.

Thomas Peadon purchased the land title to the hotel block in August 1885 and, with his wife Ellen, conducted the "Beehive Hotel" for the next eighteen years. The venue for horse races, scalp days and meetings, the hotel provided a vital social focus through a period of great social change as the huge pastoral leases were divided among the selectors.

**Tom Sanderson and an artist's impression of his original "Beehive Hotel"**

The "Beehive Hotel" on this site, was twice destroyed by fire. The great Christmas fire in 1892, claimed the original bark and slab shanty. This blaze razed much of the landscape between Beckom and Quandary. Ten years later the re-built hotel perished in a domestic fire sparked by a broken kerosene lamp, at about the time the new "Ariah Park Hotel" opened beside the proposed railway line, in 1903.



**Tom Peadon and his re-built "Beehive Hotel"**

